

State of Wyoming Corner Record

(In compliance with the *CORNER PERPETUATION AND FILING ACT*, Wyoming Statutes, 1997, Section 33-29-140, et seq., and the Rules and Regulations of the Board of Registration for Professional Engineers and Professional Land Surveyors)

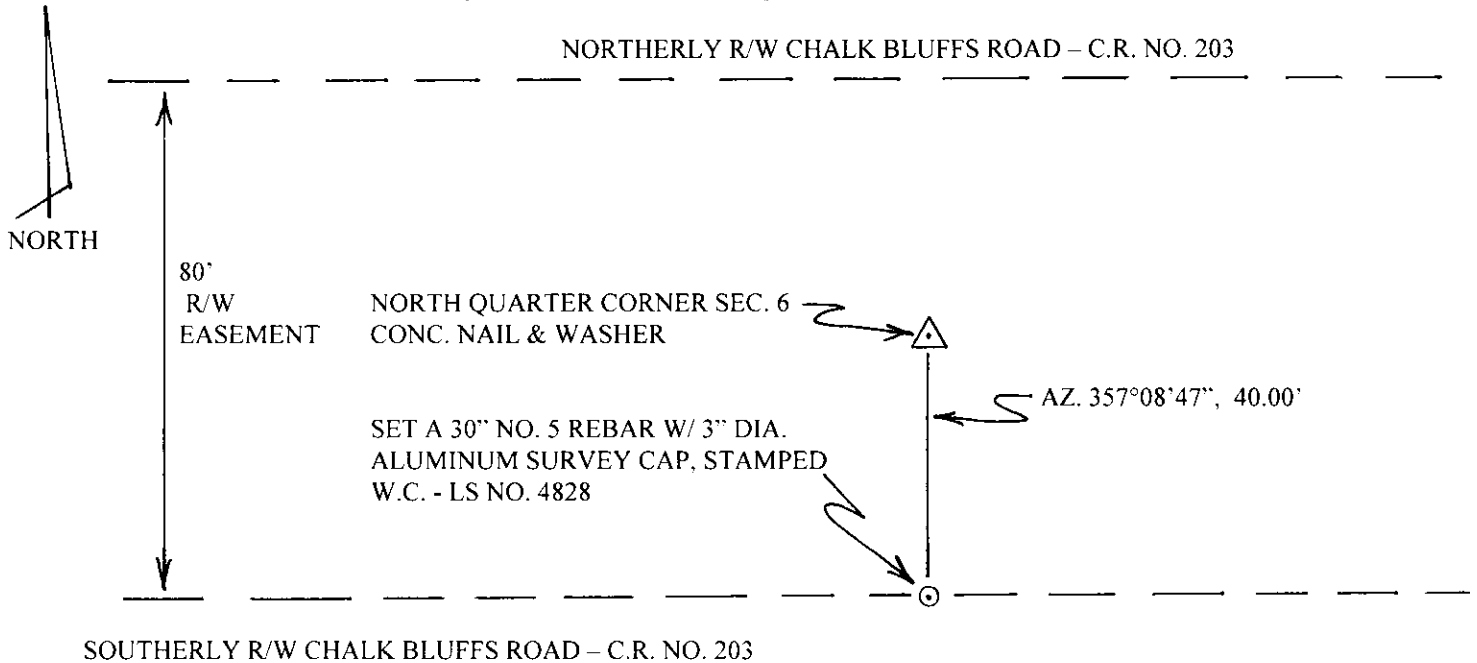
Reverse side of this form may be used if more space is needed.

Record of original survey and citation of source of historical information (if corner is lost or obliterated). Description of corner monumentation evidence found and/or monument and accessories established to perpetuate the location of this corner. Sketch of relative location of monument, accessories, and reference points with course and distance to adjacent corner(s) (if determined in this survey). Method and rationale for reestablishment of lost or obliterated corner.

The General Land Office Survey for the Third Standard Parallel between Townships 12 and 13 North, Range 65 West, 6th P.M. completed by William Ashley under contract dated June 20, 1867, and approved by the Colorado Surveyor General on June 7, 1870; and the interior subdivision of Township 12 North, Range 65 West, 6th P.M. completed by E.D. Bright under contract dated Aug. 10, 1868, survey completed Nov. 28, 1868, and approved by the Colorado Surveyor General on Jan. 25, 1875; presently recorded in the office of the U.S. Bureau of Land Management, Wyoming.

RECORD: NONE - SEE - SURVEYOR'S REPORT below.

SET: Concrete nail with 1 1/2" diameter washer stamped LS 4828 in asphalt road surface; with references cited below. See RECORD OF SURVEY recorded in the Laramie County Clerk's Office under Reception No. 616226, Bk. 1338, Pg. 1331



SURVEYORS REPORT: The Third Standard Parallel was resurveyed in January 1969 by the Laramie County Engineer's Office, and is recorded in County Road Book No. 51 (CR 51), pages 88 through 117. In this survey each of the Standard and Closing Corners on the Third Standard Parallel were reestablished and referenced on the assumed right of way with 8" Boat Spikes (BS). Many of these corners were also referenced to found Section or Quarter Corners to the north or south of the Third Standard Parallel. It is this surveyors professional opinion that this survey completed by the Laramie County Engineer's Office, and the associated Boat Spike reference monuments are the best available evidence for reestablishing the original position of said Third Standard Parallel.

This Quarter Corner was set between the reestablished Closing Corners for the N.E. and N.W. corners of said Section 6 using single proportionate measure between said reestablished corners.

Date of Field Work: APRIL 2013

Office Reference: _____

CROSS INDEX DIAGRAM

	1	2	3	4	5	6	7	8	9	10	11	12	13	14	15	16	17	18	19	20	21	22	23	24	25
A																									
B																									
C		6																							
D			5																						
E				4																					
F					3																				
G						2																			
H							1																		
J																									
K																									
L																									
M																									
N																									
O																									
P																									
Q																									
R																									
S																									
T																									
U																									
V																									
W																									
X																									
Y																									
Z																									

Land Surveyor / Firm / Address

John J. Studley, LS No. 4828

Studley Land Surveying, PC

615 West Dale Blvd.

Cheyenne, Wyoming 82009

Telephone: **307-287-4755**

This corner record was prepared by me or under my direction and supervision.
SEAL & SIGNATURE



Corner Name: North Quarter Corner of Section: 6 T 12 N R 65 W : 6th P.M. Cross-Index No.: A 3 SBRPEPLS/PLSW: March 1994: PLSW January 1998

RECORDED 5/24/2013 AT 1:58 PM REC# 616227 3K# 2338 PG# 1332
DEBRA K. LATHROP, CLERK OF LARAMIE COUNTY, WY PAGE 1 OF 1